

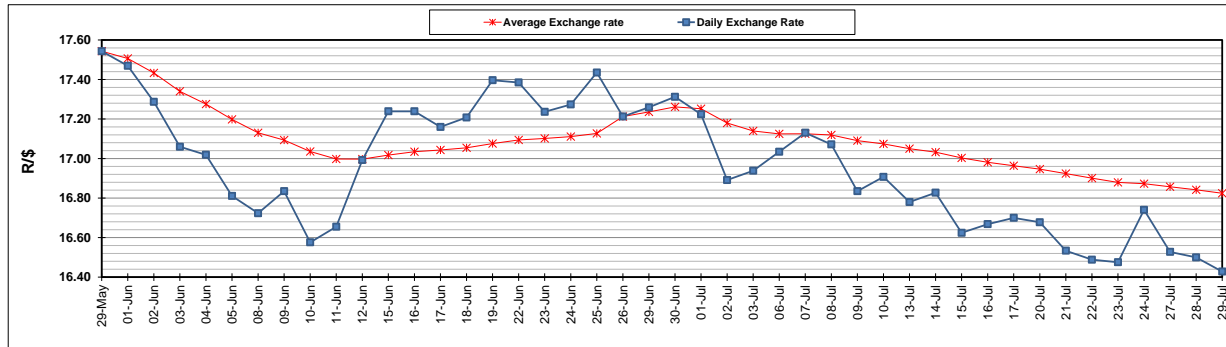
|  | PETROL 95<br>ULP | PETROL 93<br>ULP & LRP | DIESEL<br>0.05% | DIESEL<br>0.005% | ILL. PAR. |
|--|------------------|------------------------|-----------------|------------------|-----------|
| GAUTENG PUMP PRICE (SA c/l) AS FROM 01/07/2020                     | 1,512.000        | 1,483.000              | -               | -                | -         |
| WHOLESALE PRICE (SA c/l) AS FROM 01/07/2020                        | -                | -                      | 1,303.560       | 1,307.960        | 703.828   |
| SINGLE NATIONAL MAXIMUM RETAIL PRICE                               | -                | -                      | -               | -                | 882.000   |
| BASIC FUEL PRICE - 29/07/2020 (SA c/l)                             | 531.074          | 522.579                | 569.889         | 573.962          | 509.088   |
| PRESS RELEASE CONTRIBUTION TO BFP 01/07/2020 - 29/07/2020 (SA c/l) | 564.770          | 545.770                | 552.630         | 557.030          | 499.128   |
| UNIT OVER/(UNDER) RECOVERY - 29/07/2020 (SA c/l)                   | 33.696           | 23.191                 | (17.259)        | (16.932)         | (9.960)   |
| AVERAGE BASIC FUEL PRICE 26/06/2020 - 29/07/2020                   | 551.033          | 537.811                | 578.050         | 582.510          | 513.611   |
| AVERAGE UNIT OVER/(UNDER) RECOVERY 26/06/2020 - 29/07/2020         | (7.763)          | (12.416)               | (47.045)        | (46.605)         | (41.233)  |

### ANALYSIS MOVEMENT OF AVERAGE OVER/(UNDER) RECOVERY

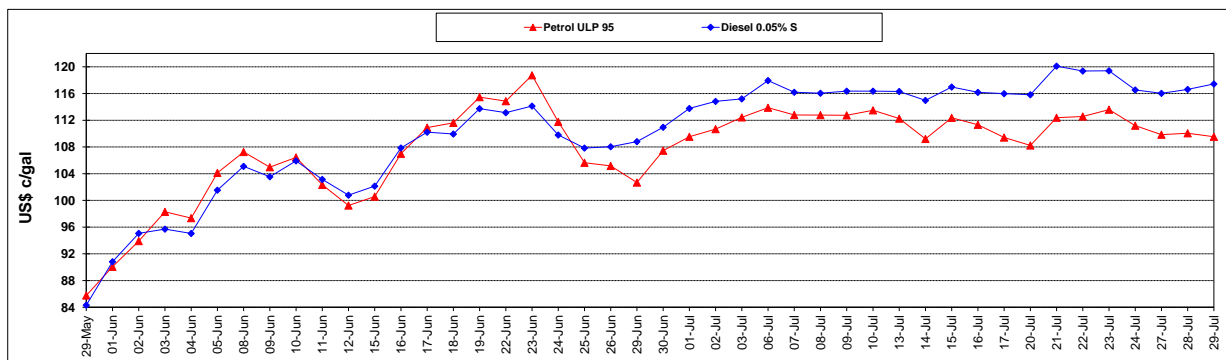
|  | PETROL 95 | PETROL 93 | DIESEL 0.05% | DIESEL 0.005% | ILL. PAR. |
|--|-----------|-----------|--------------|---------------|-----------|
| - MOVEMENT IN INTERNATIONAL PRODUCT PRICES                 | (17.677)  | (22.092)  | (57.445)     | (57.085)      | (50.474)  |
| - MOVEMENT IN EXCHANGE RATE                                | 9.914     | 9.676     | 10.400       | 10.480        | 9.241     |
| AVERAGE UNIT OVER/(UNDER) RECOVERY 26/06/2020 - 29/07/2020 | (7.763)   | (12.416)  | (47.045)     | (46.605)      | (41.233)  |

### R/\$ EXCHANGE RATE - (R/\$16.4280 - 29/07/2020)

#### EXCHANGE RATE USED IN BASIC FUEL PRICE



#### INTERNATIONAL PRODUCT PRICES OF BASKET USED IN BASIC FUEL PRICE



#### BASIC FUEL PRICE IN SA CENTS PER LITRE

